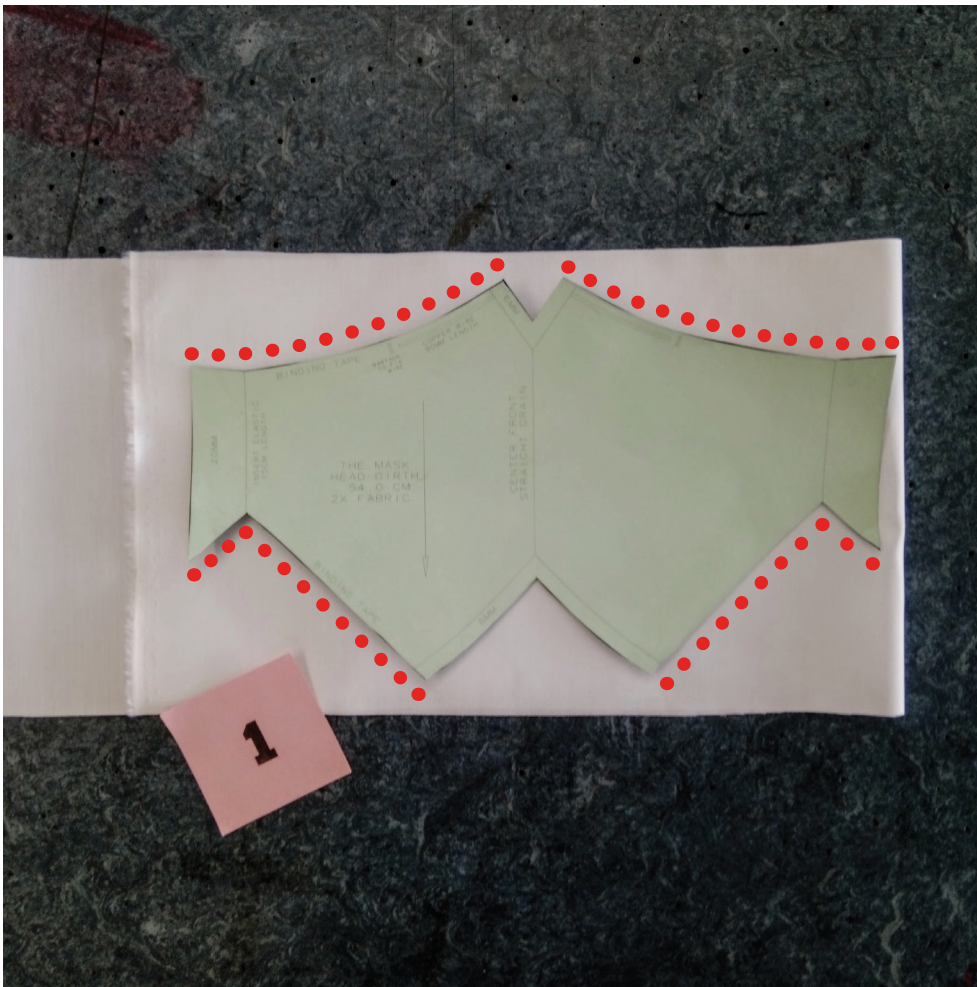




A MASK

STEP BY STEP

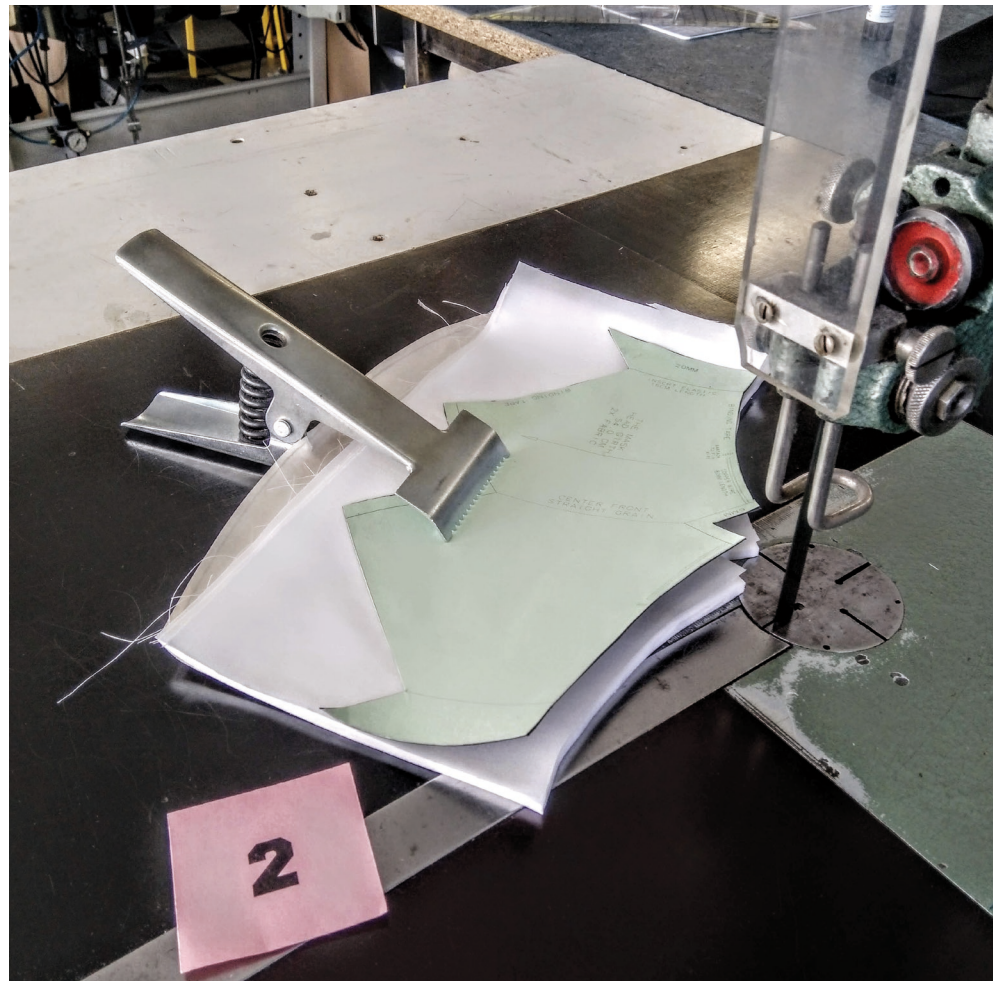
DOWNLOAD FREE PATTERN ON WWW.DEBEAUFORT.CH

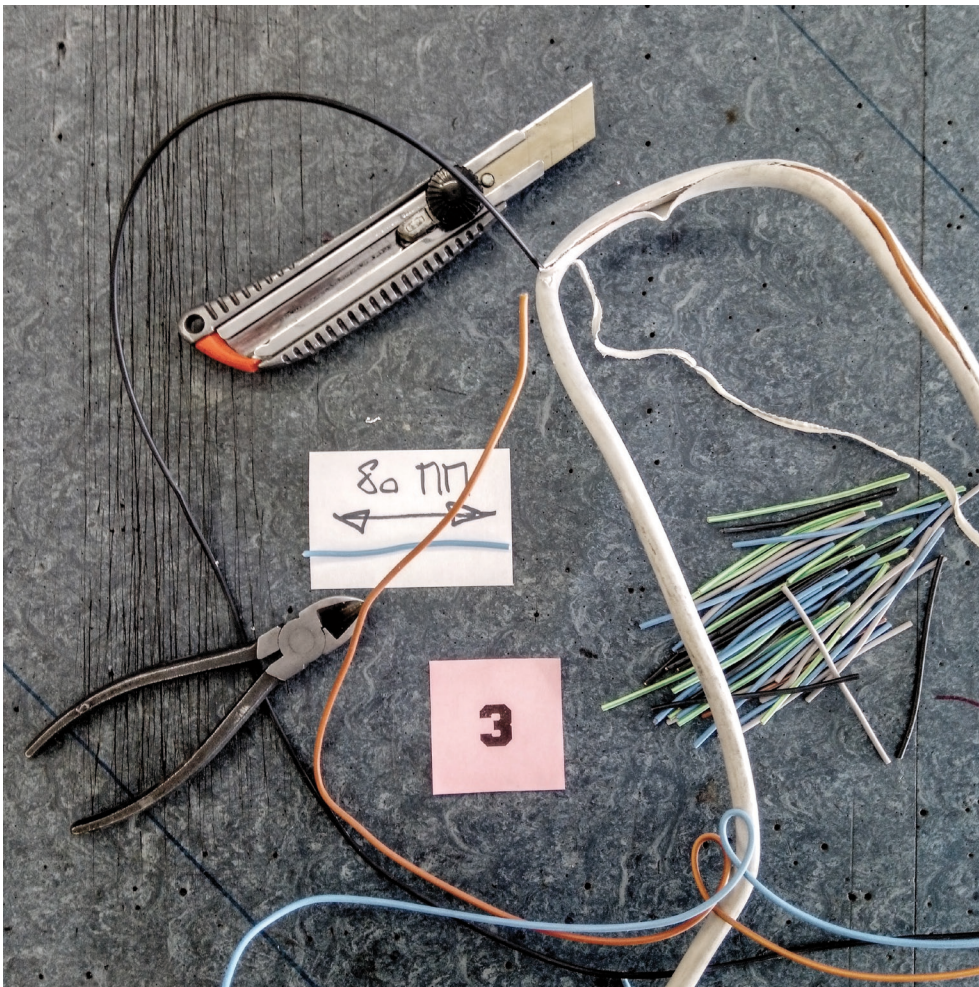


- The pattern is available in 8 sizes. The number of the size equals the head girth. For a medium sized mask, choose size 58. A mask for kids could be size 54 or smaller.
- Print out the pattern. Pay attention to print it out in a scale of 100%. Check your print by measuring the small square on the drawing: both sides should measure 50mm.
- **This model needs a binder (see step 8). If you do not have**

a binder, add 6mm sewing allowance at the bottom and top line (red dots).

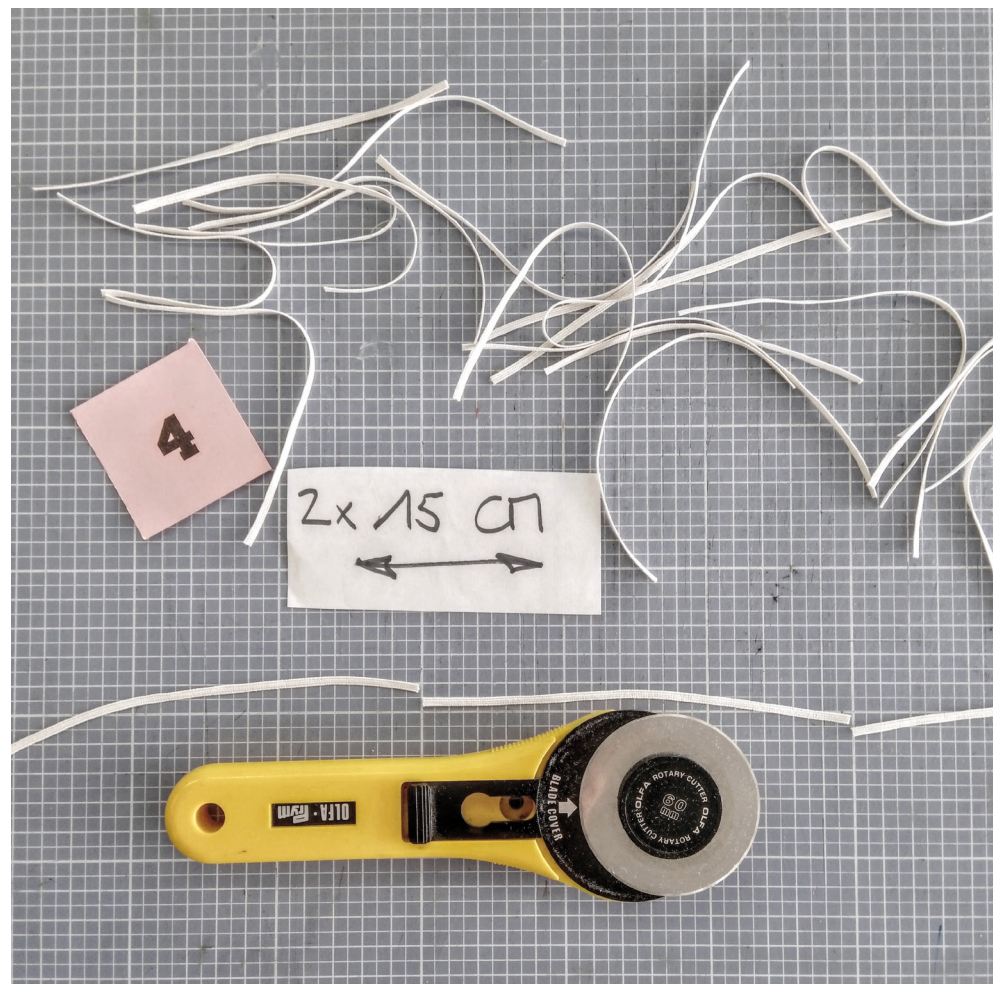
- Chose a fabric up to 130g/m² as for a men's shirts or a jersey T-Shirt. Do not pick a heavy fabric as this will make breathing nearly impossible.
- If you want to use jersey, I suggest to use only one layer. It's easier to sew.
- Cut two layers of fabric.





- Cut a piece of electrical wire with a length of 80mm. This will be use to provide an adjustable edge at the position of the.
- Do not take away the insulation as copper might react with the air.

- Cut 2 stripes of elastic ribbon with a length of 15cm.





- Cut a ribbon with oplique straight grain for binding the edges. Set the width according to the binder.
- **If you do not have a binder skip this step.**

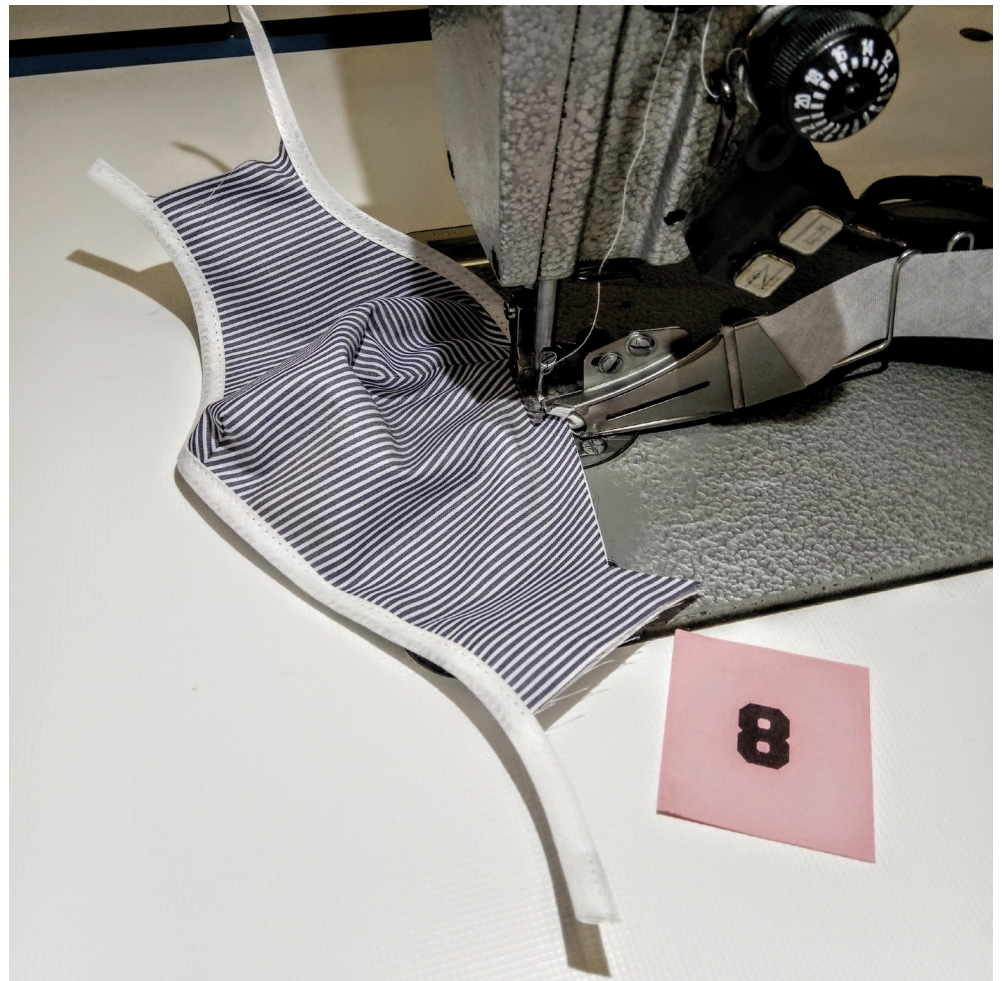
- Close the two darts with two seams.





- Turn the two fabric pieces and iron the allowance always to the same side .

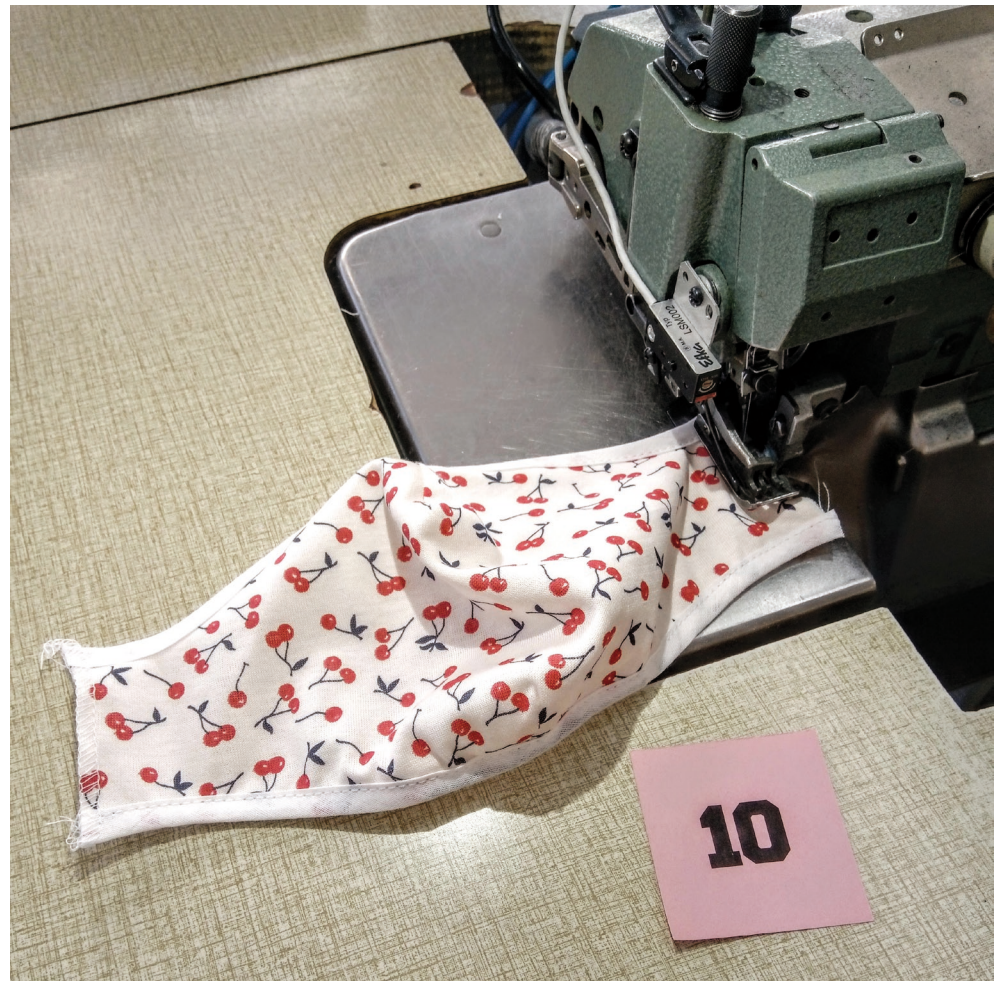
- Attach the the tape to the mask edges on top and bottom.
- **If you do not have a binder:** 1.) sew these two seams. 2.) Turn the mask inside out. 3.) Iron the seams. 4.) Put an additonal seam at 6mm from the edges.





- Cut a little of the binding tap at the mask's top edge and insert the copper wire.
- Slip it to the middle of the mask, to the nose.

- Finish the side edges with a serger.
- If you do not have a serger, use a zig-zag stitch.





- Iron the binding tape and the mask
- Turn the sides of the mask at 20mm and iron these pleats.

- Attach the elastic ribbons in the corners of the mask.





- Sew the sides at about 18mm.
- If you make several sizes add a size label here.

- Adjust the cover wire in the middle of the mask.





- Make a small bartack at each side of the wire so as it keeps its position.

- Form the copper wire according to the shape of the nose.



- Cut the remaining threads.



There you are!